

Canadian National Style Debate



P
R
O
P
O
S
I
T
I
O
N

Prime Minister
(PM)

01



02

Leader of
Opposition
(LO)

Deputy Prime
Minister
(DPM)

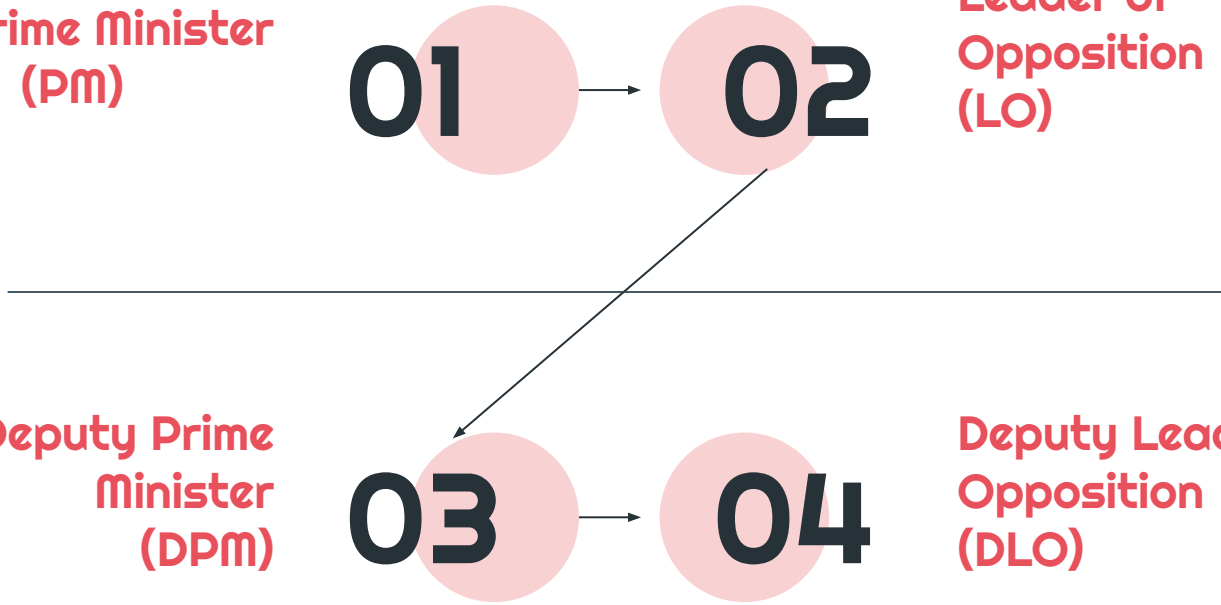
03



04

Deputy Leader of
Opposition
(DLO)

O
P
P
O
S
I
T
I
O
N



The Gist

1. You are given a resolution to debate, which may be in the form of "THBT _____" or "THW _____".
 - a. Proposition is FOR the resolution, Opposition is against
2. Try to win by presenting the best arguments and clash. Having better speaking style is a bonus!



Roles of Each Speaker

01



Prime Minister

- ❑ Defines the Resolution
 - ❑ Presents a Model
 - ❑ Introduces the Government Case - usually includes 1 to 2 contentions
-

- Models or plans are used to determine how the team is going to take the action they are advocating
- Not always necessary
- Are useful in defining the pragmatics of the case
- Does not need to address
 - Funding
 - Timelines
 - Legislative information
- Only deals with how in an ideal world the Government would follow through

What's a Model??



02



Leader of Opposition

- ❑ Refutes what PM said
 - ❑ Introduces the Opposition Case
 - ❑ Possible Definitional Challenge
-

03



Deputy Prime Minister

- ❑ Refutes what LO Said
 - Continues the Government Case
 - ❑ Sums up the Debate thus far
-

04



Deputy Leader of Opposition

- ❑ Refute what the DPM said
 - ❑ Continues the Opposition Case
 - ❑ Summarizes the debate thus far
-

Reply Speeches

- ❑ After DLO, LO gives a speech, then PM gives the final speech
- ❑ Usually a short, 3 minute **biased** summary speech
- ❑ Intended to leave the judges with a final impression

Practice! Think of points for both sides of these motions.

TH opposes government funding of art

THW stop giving out academic awards at schools

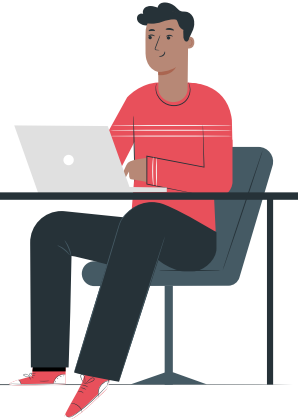
THW ban zoos

Thank you!

More (optional) material in the slides after on what's **important** for winning CNDF debates.

Judging -- What's important?

- ❑ Argumentation
- ❑ Clash (strategy)
- ❑ Manner



Argumentation

- ❑ teams are judged on argumentation using two criterias:
- ❑ Structure of arguments
 - ❑ Clear, concise, easy to understand, logical
- ❑ Content of the arguments
 - ❑ Factually strong, well supported with evidence, valid arguments



Clash

Structure of clash:

- Clear, concise, easy to understand, logical
- Content of the clash
- Factually strong, well supported with evidence, valid clash



Manner

- Find your own style :)
- Body Language
- Vocabulary
- Tone and speed
- Organisation



Points of Information

- Also a component of strategy
- Used to ask questions in the middle of speeches
 - Pertinent
 - Should illustrate a flaw in the other teams arguments, or reposition one of their own arguments
 - Short, and Clear



Final notes

- The weighting of Argumentation, Clash (strategy), and Manner are relatively balanced.
- Most debates are judged holistically, meaning that judges care about how **generally persuasive** your speech was.

Thank you!

<https://albertadebate.ca/Docs/Files/resources/styles/Canadian%20National%20Guide.pdf>

This is a great resource for further questions about CNDF!

Email

universalvoices12@gmail.com

for additional questions!